

CASA LUSSO

DUOFLOW Kitchen Mixer with Filtered Water Function Installation Instructions

Product Code - DF121-XX

**CONGRATULATIONS ON THE PURCHASE OF YOUR NEW CASA LUSSO TAPWARE.
WE HOPE YOU AND YOUR FAMILY ENJOY YOUR NEW PRODUCT AND CONSIDER US FOR ANY
FUTURE PROJECT. CASA LUSSO PRODUCTS HAVE BEEN MANUFACTURED UNDER THE
HIGHEST STANDARDS OF QUALITY AND WORKMANSHIP.**



DF121-XX - Kitchen Mixer
with Filtered Water Function



Polished Stainless Steel



Matte Black



Brushed Champagne Gold



Brushed Nickel



Gunmetal



Titanium Bronze



WARRANTY

GENERAL INFORMATION

MAINTENANCE

- Clean regularly using mild soap and dry with a soft cloth.
- Do not use abrasive cleaners, harsh detergents or citrus based cleaners on any products as these will scratch the surface.
- Tightening or adjustment of Tapware over time is considered general maintenance.
- Failure to clean/replace aerators/flow restrictors as required will void warranty.
- Damage to finishes that arise from installation or post installation will void warranty.

The warranty will not apply if:

- The product has been damaged by improper use;
- The product has not been used in accordance with any applicable instruction guide;
- The purchaser has attempted to modify or repair the product;
- The purchaser has failed to observe the cleaning and maintenance guidelines;
- The product is not installed by a licenced Plumber.
- Flow controllers/ aerators not regularly cleaned/ replaced.

Product warranties are personal to the person who acquires the product for their own consumption or use and not for resale or resupply. Claims with this product cannot be made by anyone other than the consumer. Where a product is covered by parts and labour warranty, the warranty covers both the repair of the defective part or the provision of a spare part to replace the defective part and the installation of that part. Where a product is covered by parts only, the warranty covers both the repair of the defective part or the provision of a spare part in replacement. It does not include the removal of the defective part or the installations of the repaired or replaced part. We reserve the right to provide minor components (e.g. handles, aerators, hoses, dress rings and washers) as 'Parts Only' to the customer. Casa Lusso reserves the right to alter/ amend this warranty offer in writing at any time.

FEATURES

Premium Warranty (Domestic Use):

15 year Ceramic cartridge replacement only
7 year Replacement products and parts¹
1 year parts & labour²

Material: Stainless Steel 304 Construction

WELS 5 Star, 6 litres per minute

**ALL INSTALLATIONS MUST COMPLY
WITH AS/NZS3500**

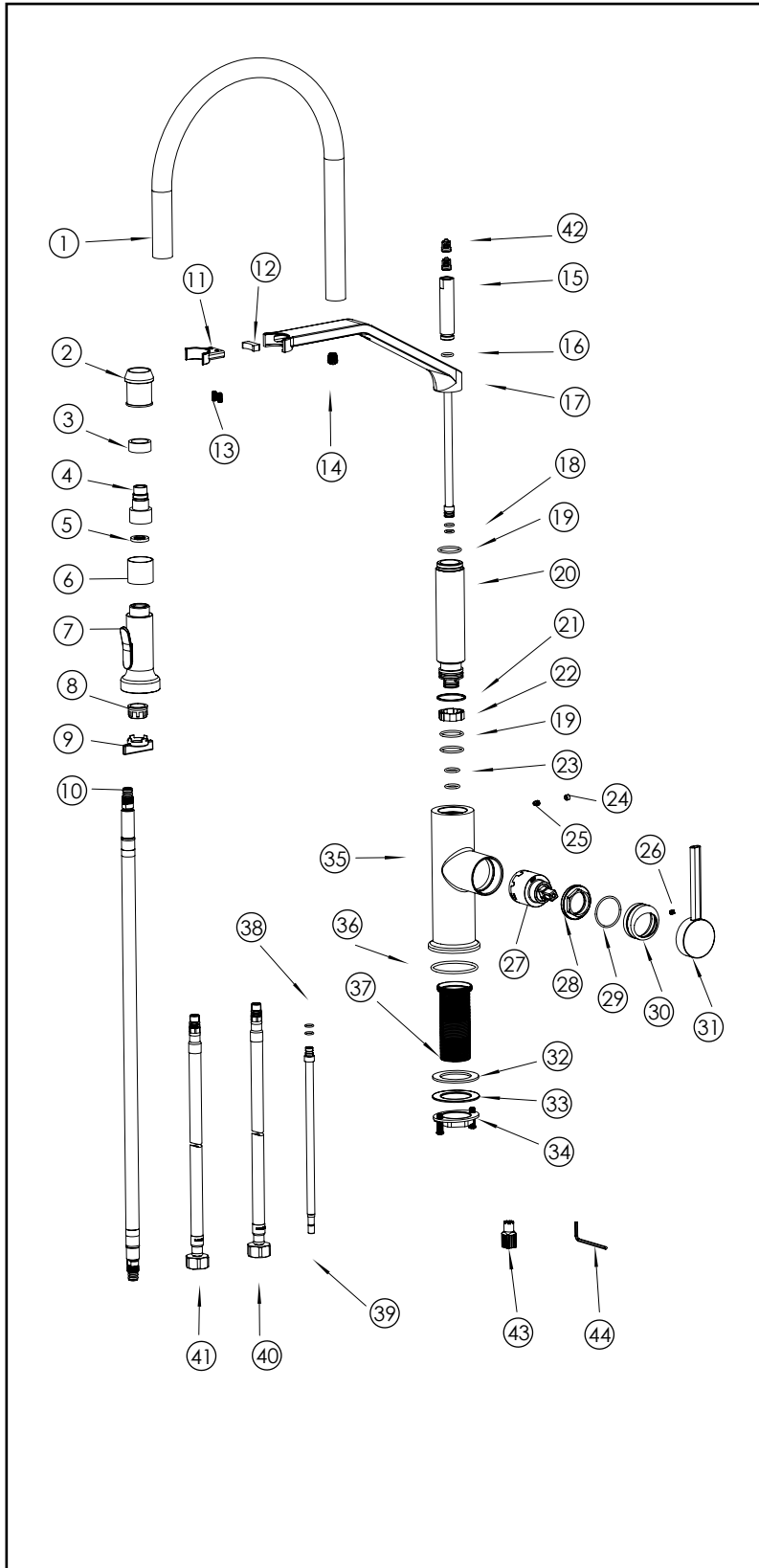
**This product complies with the requirements
of Lead-Free standards as defined in the
National Construction Code Volume 3 and
is suitable for use as part of Lead-Free
Installation.**

¹ Excludes Damage to ceramic disk cartridges from pieces of copper tube, plastic tube, sand, dirt or thread tube etc. All speciality finishes are subject to 2 year replacement product and parts and 1 year replacement product and parts & labour. ² Jumper valves and ceramic disk spindles; 1 year parts only.

FAILURE TO COMPLY WITH ANY OF THE ABOVE INSTRUCTIONS WILL VOID ALL WARRANTIES

DUOFLOW Kitchen Mixer with Filtered Water Function Installation Instructions

Product Code - DF121-XX



CONTENTS		QTY
1	Silicon Gel Hose 580mm	1
2	8020095 sleeve	1
3	23.5 x 18 x 10 magnet	1
4	G1/2 joint	1
5	Flow Controller gasket	1
6	8020095 sleeve	1
7	28mm Sprayer (Lead Free)	1
8	40.2100.00 24mm aerator	1
9	aerator wrench	1
10	520mm flexible hose	1
11	8020095 sleeve	1
12	8020095 magnet	1
13	M4x10 Screw	2
14	Neoperl M10*1 aerator	1
15	8020095 joint	1
16	O ring 13 x 2	1
17	8020095 holder	1
18	O ring 10.4 x 1.7	2
19	O ring	3
20	8020095 tube	1
21	Wearing ring	1
22	Jump ring 27 x 21 x 7.7	1
23	O ring 16x2	2
24	5.6 decoration button	1
25	M5x6 screw	1
26	M5x4 screw	1
27	Wanhai 35 filter cartridge	1
28	M37 gland	1
29	O ring 34 x 1.8	1
30	63162 decoration cap	1
31	63162 handle	1
32	Gasket	1
33	Gasket	1
34	Lock nut	1
35	8020095 body	1
36	O ring 50 x 2.5	1
37	Shank M37-M32 60mm height	1
38	O ring 9.5 x 1.5	2
39	M8 filter inlet tube	1
40	G 1/2 70cm PEX inlet hose (Blue)	1
41	G 1/2 70cm PEX inlet hose (Red)	1
42	Φ 10 check valve	2
43	10mm wrench	1
44	2.5mm allen key	1

FAILURE TO COMPLY WITH ANY OF THE ABOVE INSTRUCTIONS WILL VOID ALL WARRANTIES

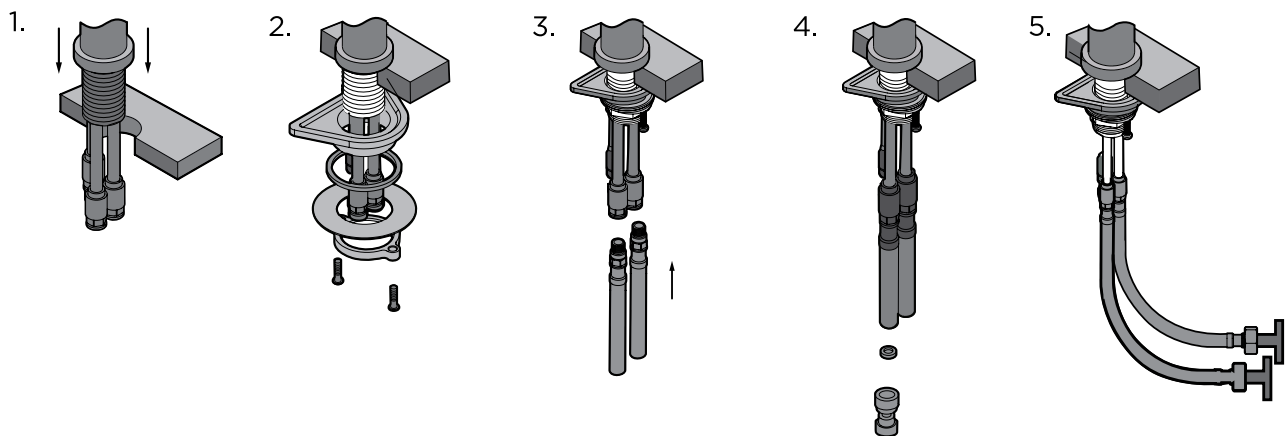
DUOFLOW Kitchen Mixer with Filtered Water Function Installation Instructions

Product Code - DF121-XX

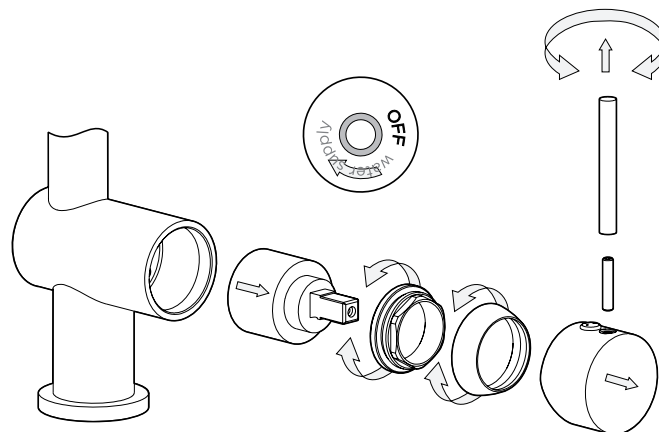
BEFORE INSTALLATION - PLEASE READ

The feeding pipes have to be rinsed thoroughly before the installation of the mixer, so that no shavings, welding or hemp residual or other dirt can be found in the pipes. Foreign bodies can enter the mixer through the rinsed pipes or the general water plant and could damage the washers/ring washers. In order to guarantee product's long life the undersink taps with filter should be installed and cleaned periodically. Before the setting to work, unscrew the aerator and rinse it very well.

Technical data: Minimum working pressure 0,5 bar. Maximum working pressure 10 bar (in case of water pressure higher than 10 bar it is recommended to install pressure reducers). Recommended working pressure 1-5 bar. Maximum working temperature 90°C, recommended working temperature 60 °C.



CARTRIDGE REPLACEMENT



FAILURE TO COMPLY WITH ANY OF THE ABOVE INSTRUCTIONS WILL VOID ALL WARRANTIES

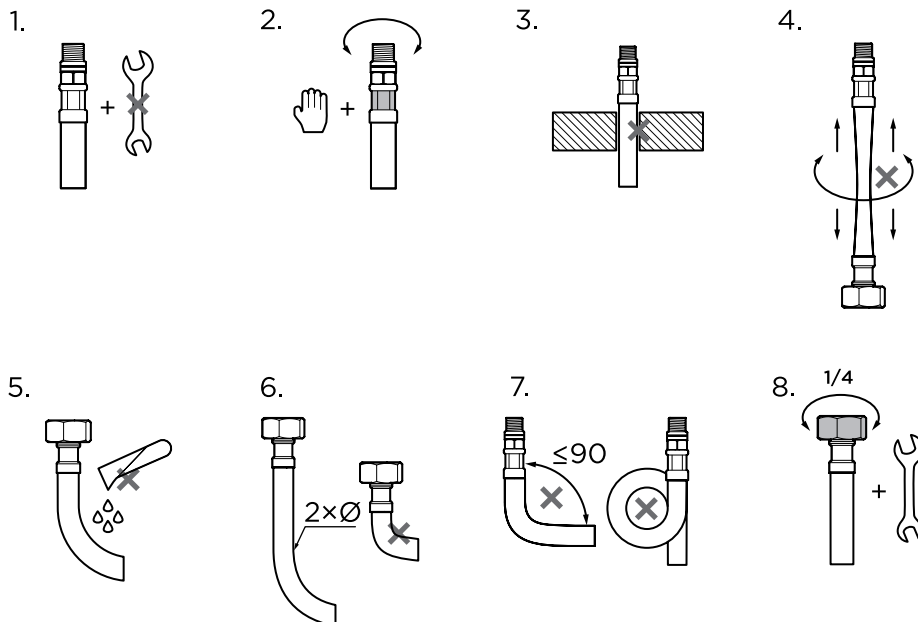
DUOFLOW Kitchen Mixer with Filtered Water Function Installation Instructions

Product Code - DF121-XX

INSTALLATION

To avoid ingress of solids (abrasive particles) in the tap, it is recommended to apply 100-300 micron filters. Warning: **Before installing the tap make sure the water piping location is correct.**

1. Don't tighten by tools.
2. Hand-tighten O-ring seal connectors until feeling a mechanical rest.
3. Don't set the hose in the wall.
4. Tighten the hose without any twist or tension.
5. Prolonged contact with any substance, even scarcely aggressive, can cause external braid damage and subsequent flexible burst.
6. Before bending the hose please consider a straight part of 2 times the external diameter.
7. Maintain minimum bend radius (DN= nominal internal diameter): DN6 = 025mm, DN8 = 030mm, DN10 = 035mm, DN13 = 045mm.
8. Hand-tighten connectors with gasket seal (nuts) as more as possible, then apply 1/4 turn using an appropriate wrench.



FAILURE TO COMPLY WITH ANY OF THE ABOVE INSTRUCTIONS WILL VOID ALL WARRANTIES

DUOFLOW Kitchen Mixer with Filtered Water Function Installation Instructions

Product Code - DF121-XX

MAINTENANCE

Uneven spray of water, spillage, and noises show that the aerator is clogged. We recommend you to remove the aerator and wash it off under running water periodically. The risk of clogging of the aerator and failures of the mixing valve cartridge can be significantly reduced by installing 100-300 micron filters in the piping at the valve, to prevent ingress of foreign particles inside the mixing valve (rust, sand etc).

To prevent lime stains on the mixing valve, it is recommended to clean the valve regularly. The valve should be washed with soap solution followed by washing with water and removing moisture with dry soft cloth. Liquid soap, shampoo, and shower gel residues can also damage decorative coating. If the residues present on the product, you must rinse them off thoroughly with clean water.

To avoid damaging the surface of the product, you should not apply abrasives or cleaning paste for maintenance. To avoid discoloration of decorative coatings, you should not apply for maintenance chemical products containing aggressive chemical agents of acids, alkalis, acetone, ammonium chloride and other chlorine-containing components.

DO NOT USE SPANNER TO TIGHTEN AS IT CAN DAMAGE THE O RING

IT IS IMPORTANT TO FLUSH OUT THE WATER PIPES BEFORE INSTALLING THE MIXER.

IMPORTANT

IT IS IMPORTANT TO FLUSH OUT THE WATER PIPES BEFORE INSTALLING THE MIXER.

- *Hot and cold water inlet pressures should be equal.*
- *Inlet pressure range: 150-500kPA*
- *Regulation:
500kPA maximum operating pressure at any outlet within a building. (Ref. AS/NZS 3500)*
- *Maximum hot water temperature: 80°C*

FAILURE TO COMPLY WITH ANY OF THE ABOVE INSTRUCTIONS WILL VOID ALL WARRANTIES