

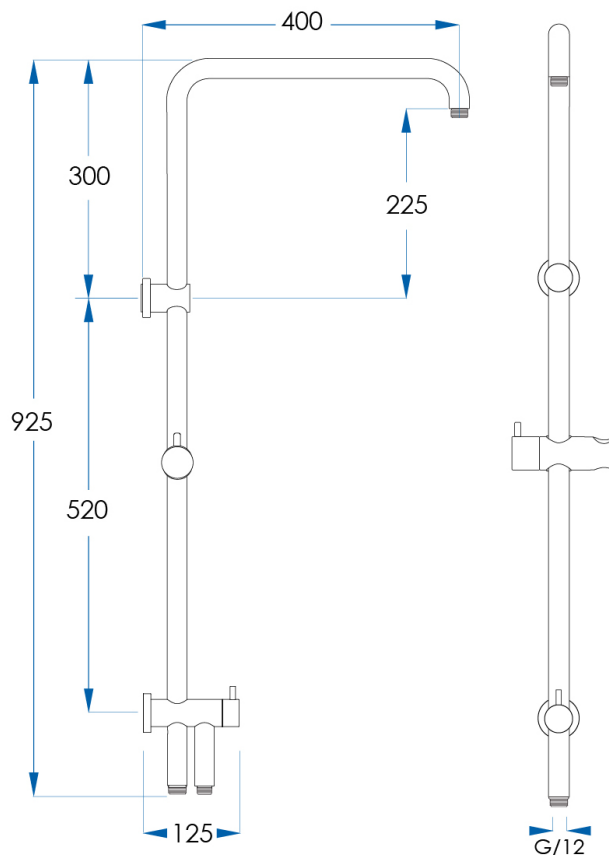
# ELEMENTS

Square Shower Rail with External Water Inlet

**5**  
YEAR  
WARRANTY



-  Gunmetal
-  Brushed Nickel
-  Champagne Gold
-  Polished Stainless Steel
-  Brushed Brass
-  Matte Black
-  Titanium Bronze
-  Brushed Champagne Gold



AVAILABLE IN 8 FINISHES	
CODE	FINISH
ESR03-PS	Polished Stainless Steel
ESR03-MB	Matte Black
ESR03-BB	Brushed Brass
ESR03-BN	Brushed Nickel
ESR03-GM	Gunmetal
ESR03-CG	Champagne Gold
ESR03-TB	Titanium Bronze
ESR03-BG	Brushed Champagne Gold

## SPECIFICATIONS

**Material** 304 Stainless Steel.  
**Includes** Shower Rail (ELA-XX)  
 Dual Bottom Inlet (ELD-XX) including 1x 600mm Hose  
 Shower Arm (ELE-XX)  
 Shower Hose (SS150-XX) / SHP-MB  
 Shower Elbow (RND90-XX)

**Warranty** Shower Rail, Shower Rail Inlet & Shower Arm: 5 year replacement product or parts  
 Shower Hose: 1 year replacement product or parts

  
 AS 3662  
 WM 23083  
 CASA LUSSO

**CASA LUSSO**

Available at **[hb] Highgrove Bathrooms.com.au**

Due to our policy of continuous development, all designs and measurements are intended only as a guide and are subject to change without notice. Being hand made products they are subject to a size variance E&OE. This brochure is representative of the actual products at time of printing. Please confirm all particulars before purchase. Casa Lusso recommends having the product on site before commencing rough in. For our own established efforts supporting environmental and health preservation all of our Vanities are made to the commercially recognised E1 Standard.

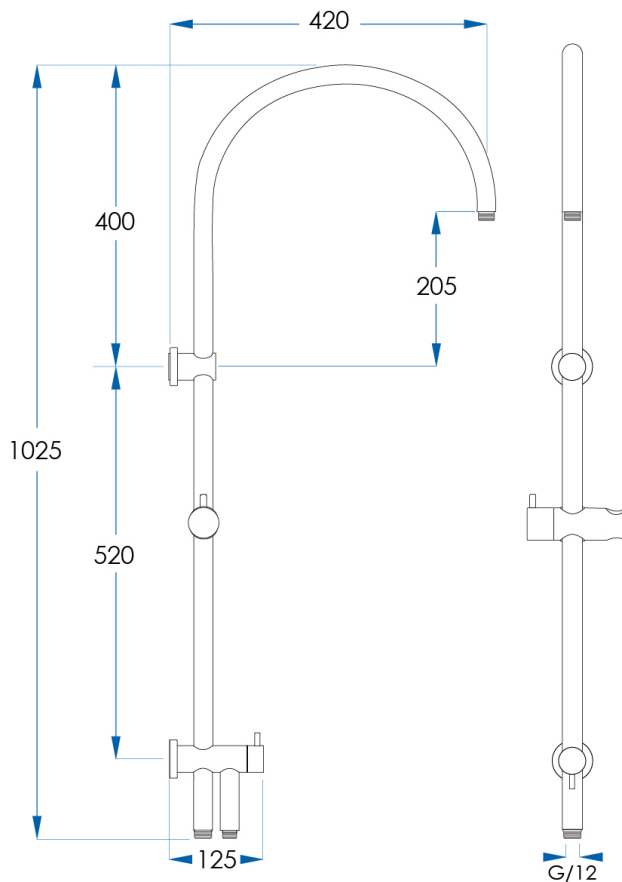
# ELEMENTS

Gooseneck Shower Rail with External Water Inlet

**5**  
YEAR  
WARRANTY



-  Gunmetal
-  Brushed Nickel
-  Champagne Gold
-  Polished Stainless Steel
-  Brushed Brass
-  Matte Black
-  Titanium Bronze
-  Brushed Champagne Gold



## AVAILABLE IN 8 FINISHES

CODE	FINISH
ESR06-PS	Polished Stainless Steel
ESR06-MB	Matte Black
ESR06-BB	Brushed Brass
ESR06-BN	Brushed Nickel
ESR06-GM	Gunmetal
ESR06-CG	Champagne Gold
ESR06-TB	Titanium Bronze
ESR06-BG	Brushed Champagne Gold

## SPECIFICATIONS

<b>Material</b>	304 Stainless Steel.
<b>Includes</b>	Shower Rail (ELA-XX) Dual Bottom Inlet (ELD-XX) including 1x 600mm Hose Shower Arm (ELF-XX) Shower Hose (SS150-XX) / SHP-MB Shower Elbow (RND90-XX)
<b>Warranty</b>	Shower Rail, Shower Rail Inlet & Shower Arm: 5 year replacement product or parts Shower Hose: 1 year replacement product or parts



AS 3662  
WM 23083  
CASA LUSSO

**CASA LUSSO**

Available at **[hb]** Highgrove Bathrooms.com.au

Due to our policy of continuous development, all designs and measurements are intended only as a guide and are subject to change without notice. Being hand made products they are subject to a size variance E&OE. This brochure is representative of the actual products at time of printing. Please confirm all particulars before purchase. Casa Lusso recommends having the product on site before commencing rough in. For our own established efforts supporting environmental and health preservation all of our Vanities are made to the commercially recognised E1 Standard.

# CASA LUSSO Installation Instructions

## ELEMENTS Square Shower Rail with External Water Inlet (ESR03-XX) ELEMENTS Gooseneck Shower Rail with External Water Inlet (ESR06-XX)

Suits ELA-XX, ELD-XX, ELF-XX & SS150-XX/SHP-MB

**CONGRATULATIONS ON THE PURCHASE OF YOUR NEW CASA LUSSO TAPWARE.  
WE HOPE YOU AND YOUR FAMILY ENJOY YOUR NEW PRODUCT AND CONSIDER US FOR ANY  
FUTURE PROJECT. CASA LUSSO PRODUCTS HAVE BEEN MANUFACTURED UNDER THE  
HIGHEST STANDARDS OF QUALITY AND WORKMANSHIP.**



ESR03-XX

ESR06-XX

ESR03-XX - Square Shower Rail with External Water Inlet  
ESR06-XX - Gooseneck Shower Rail with External Water Inlet



WARRANTY

### GENERAL INFORMATION

#### MAINTENANCE

- Clean regularly using mild soap and dry with a soft cloth.
- Do not use abrasive cleaners, harsh detergents or citrus based cleaners on any products as these will scratch the surface.
- Tightening or adjustment of Tapware over time is considered general maintenance.
- Failure to clean/replace aerators/flow restrictors as required will void warranty.
- Damage to finishes that arise from installation or post installation will void warranty.

#### The warranty will not apply if:

- The product has been damaged by improper use;
- The product has not been used in accordance with any applicable instruction guide;
- The purchaser has attempted to modify or repair the product;
- The purchaser has failed to observe the cleaning and maintenance guidelines;
- The product is not installed by a licenced Plumber.
- Flow controllers/ aerators not regularly cleaned/ replaced.

Product warranties are personal to the person who acquires the product for their own consumption or use and not for resale or resupply. Claims with this product cannot be made by anyone other than the consumer. Where a product is covered by parts and labour warranty, the warranty covers both the repair of the defective part or the provision of a spare part to replace the defective part and the installation of that part. Where a product is covered by parts only, the warranty covers both the repair of the defective part or the provision of a spare part in replacement. It does not include the removal of the defective part or the installations of the repaired or replaced part. We reserve the right to provide minor components (e.g. handles, aerators, hoses, dress rings and washers) as 'Parts Only' to the customer. Casa Lusso reserves the right to alter/ amend this warranty offer in writing at any time.

### FEATURES

**Premium Warranty (Domestic Use):**  
5 year replacement products and parts <sup>1</sup>  
1 year parts & labour

**Material:** Stainless Steel 304 Construction

**ALL INSTALLATIONS MUST COMPLY  
WITH AS/NZS3500**

**This product complies with the requirements  
of Lead-Free standards as defined in the  
National Construction Code Volume 3 and  
is suitable for use as part of Lead-Free  
Installation.**

<sup>1</sup> One year replacement product and parts  
applies to Shower Hose only (SS150-XX/SHP-MB)

**FAILURE TO COMPLY WITH ANY OF THE ABOVE INSTRUCTIONS WILL VOID ALL WARRANTIES**

# CASA LUSSO Installation Instructions

## ELEMENTS Square Shower Rail with External Water Inlet (ESR03-XX) ELEMENTS Gooseneck Shower Rail with External Water Inlet (ESR06-XX)

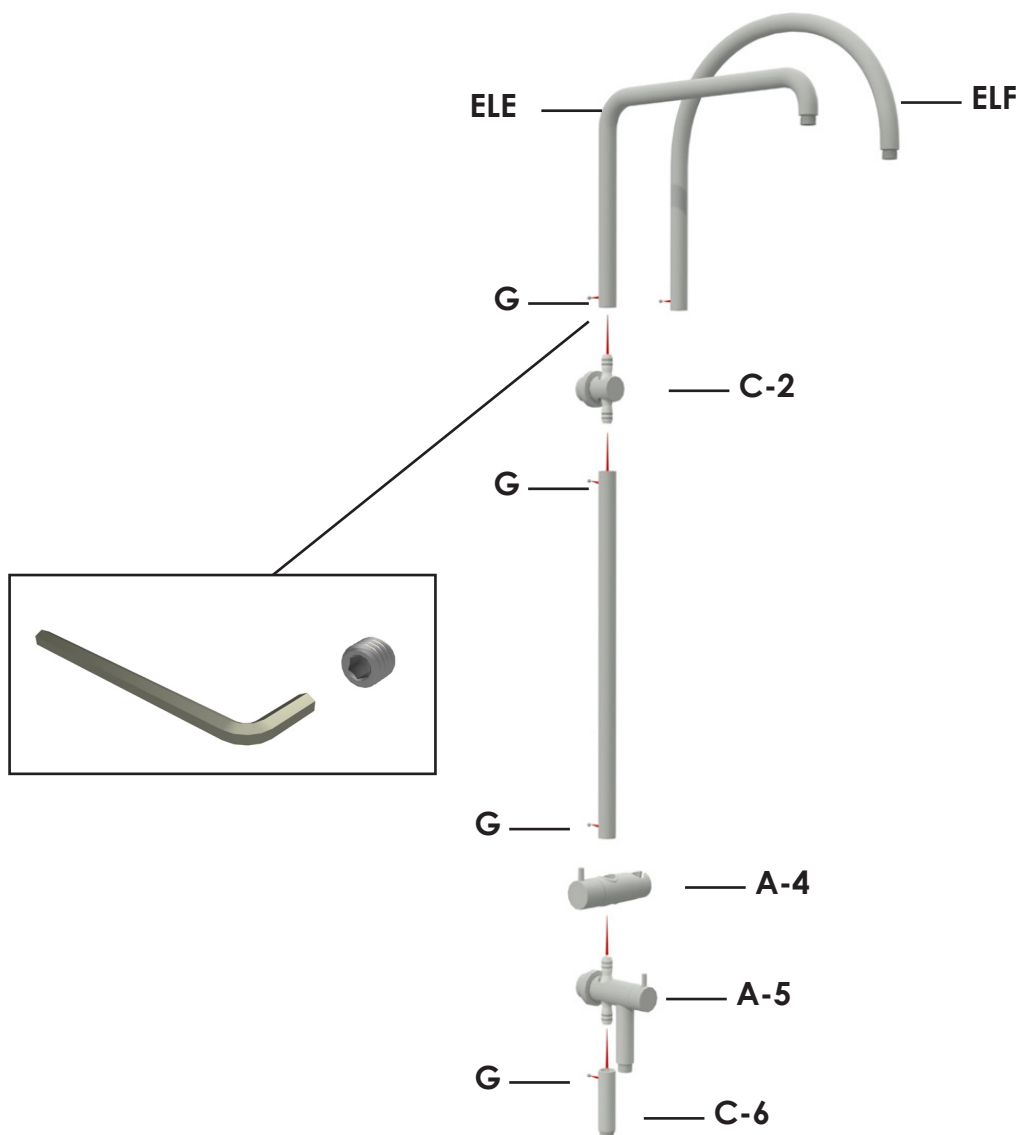
Suits ELA-XX, ELD-XX, ELF-XX & SS150-XX/SHP-MB

### INSTALLATION

Assemble parts ELA, ELD + (ELE or ELF) together.

**NOTE: USE SILICONE LUBRICANT ON ALL O-RING WHEN CONNECTING PARTS TOGETHER.**

- Install the handshower slider A-4 to the shower rail A-3.
- Connect parts C-2, A-3, A-5, C-6 and (ELE or ELF) together. Grub screws G may need to be loosened for part to connect together properly. Keep in mind if the installation of the shower rail will be top or bottom water inlet
- Tighten 4x grub screws G, make sure the direction of the grub screw is facing the showerwall so it cannot be seen from the front.



**FAILURE TO COMPLY WITH ANY OF THE ABOVE INSTRUCTIONS WILL VOID ALL WARRANTIES**

# CASA LUSSO Installation Instructions

## ELEMENTS Square Shower Rail with External Water Inlet (ESR03-XX) ELEMENTS Gooseneck Shower Rail with External Water Inlet (ESR06-XX)

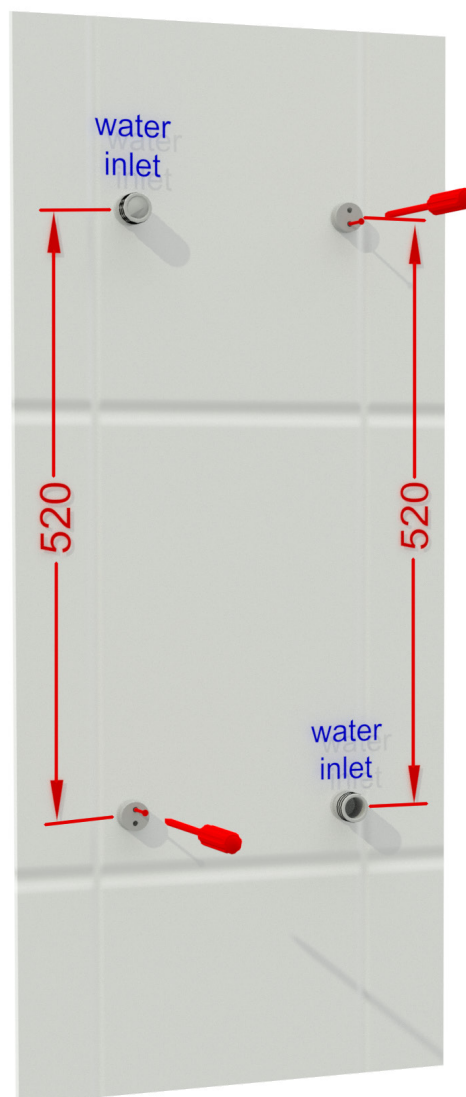
Suits ELA-XX, ELD-XX, ELF-XX & SS150-XX/SHP-MB

### 2. Install connections on the wall.

- Mark 520mm distance between water outlet and wall bracket.
- Use masking tape to mark hole locations before drilling.
- Before drilling, check distance with the assembled shower rail.
- Make sure the overhead shower and gooseneck do not interfere with the ceiling or the door of the shower enclosure.

Note: The wall bracket has two holes. These can be installed horizontal or vertical. Distance between holes is 12mm.

- Once you are satisfied with the hole locations marked on the masking tape are correct. Drill two holes at 6.5mm for wall plugs supplied.



**FAILURE TO COMPLY WITH ANY OF THE ABOVE INSTRUCTIONS WILL VOID ALL WARRANTIES**

# CASA LUSSO Installation Instructions

**ELEMENTS Square Shower Rail with External Water Inlet (ESR03-XX)**  
**ELEMENTS Gooseneck Shower Rail with External Water Inlet (ESR06-XX)**

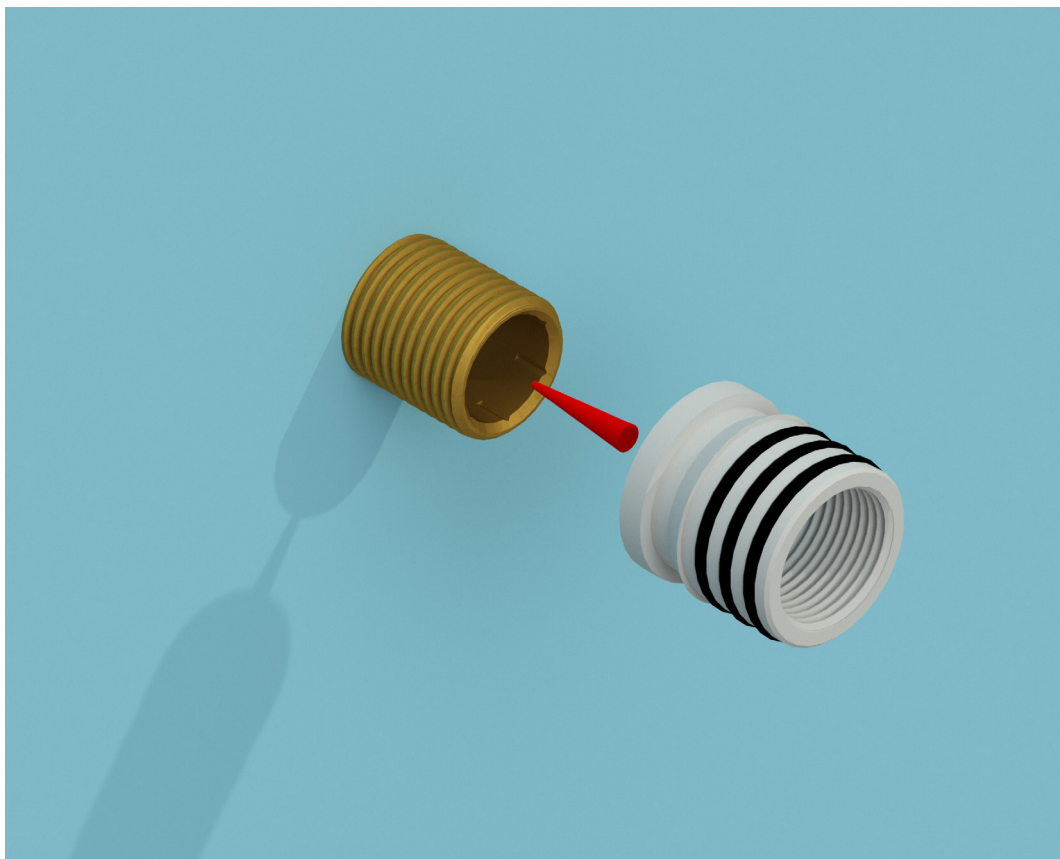
*Suits ELA-XX, ELD-XX, ELF-XX & SS150-XX/SHP-MB*

### 3. Install Water Inlet Adapter.

Screw the ½ inch BSP wall inlet adapter to the ½ male threaded pipe on the wall.

NOTE: As this is a Stainless Steel to Brass connection, use PTFE Grey plumbing tape or thread sealant.

DO NOT use white or pink Teflon tape.



**FAILURE TO COMPLY WITH ANY OF THE ABOVE INSTRUCTIONS WILL VOID ALL WARRANTIES**

# CASA LUSSO Installation Instructions

**ELEMENTS Square Shower Rail with External Water Inlet (ESR03-XX)**

**ELEMENTS Gooseneck Shower Rail with External Water Inlet (ESR06-XX)**

*Suits ELA-XX, ELD-XX, ELF-XX & SS150-XX/SHP-MB*

## 4. Install shower rail assembly to the wall.

- Slide wall flanges forward against the rail to access four grub screws. Tighten 4 x grub screws using a hex key.
- Do not slide flange back against the wall until installation is finished and water leak testing has been done.



**FAILURE TO COMPLY WITH ANY OF THE ABOVE INSTRUCTIONS WILL VOID ALL WARRANTIES**

# CASA LUSSO Installation Instructions

## ELEMENTS Square Shower Rail with External Water Inlet (ESR03-XX) ELEMENTS Gooseneck Shower Rail with External Water Inlet (ESR06-XX)

Suits ELA-XX, ELD-XX, ELF-XX & SS150-XX/SHP-MB

### 5. Connect the Shower Hose, Hand Shower and Shower Head.

- Face hand shower towards the shower base and turn on the water.
- Check the handle of the on/off diverter is facing the same direction as the outlet being used at the time.
- Check for any water leakages at the water inlet or any connections on the shower rail.
- If no leakages are detected, turn off the shower and slide the two wall flanges back against the wall.



**FAILURE TO COMPLY WITH ANY OF THE ABOVE INSTRUCTIONS WILL VOID ALL WARRANTIES**