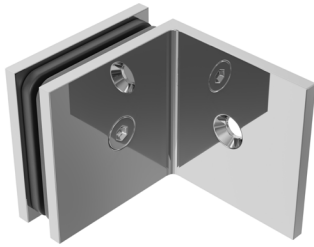


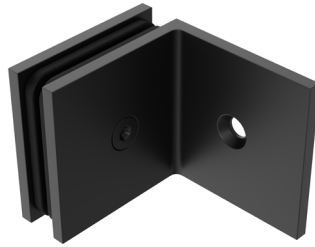
# SHOWER PANEL WALL BRACKET

For Bath Screen Kits

**5**  
YEAR  
WARRANTY



**Finish:** Polished Chrome  
**Code:** GFB90-CH



**Finish:** Matte Black  
**Code:** GFB90-MB



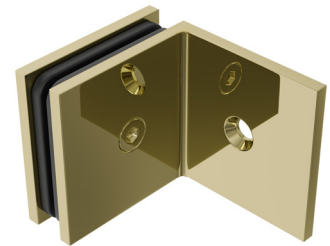
**Finish:** Brushed Brass  
**Code:** GFB90-BB



**Finish:** Brushed Nickel  
**Code:** GFB90-BN



**Finish:** Gunmetal  
**Code:** GFB90-GM



**Finish:** Champagne Gold  
**Code:** GFB90-CG

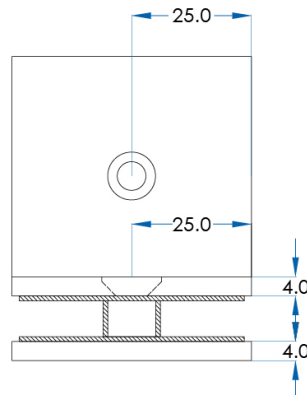
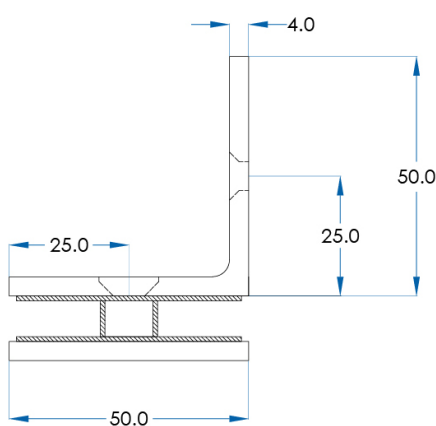
## SPECIFICATIONS

Made to Australian standards code AS/NZS 2208:1996 Safety glazing materials in buildings. To Meet Australian Safety Standards and Warranty Purposes, Toughened Safety Glass **Must be Installed By a Licensed Glazier**. Due to the Nature of Tempered Safety Glass, Please Make Sure You Take Care with Transport and Handling of Your Products.

**Material:** Brass Construction

**Warranty:** 5 yr replacement product  
1 yr labour

**Includes:** Wall Bracket Only



## CASA LUSO

Due to our policy of continuous development, all designs and measurements are intended only as a guide and are subject to change without notice. Being hand made products they are subject to a size variance E&OE. This brochure is representative of the actual products at time of printing. Please confirm all particulars before purchase. Casa Lusso recommends having the product on site before commencing rough in.

Available at

**hb** Highgrove Bathrooms  
[www.highgrovebathrooms.com.au](http://www.highgrovebathrooms.com.au)