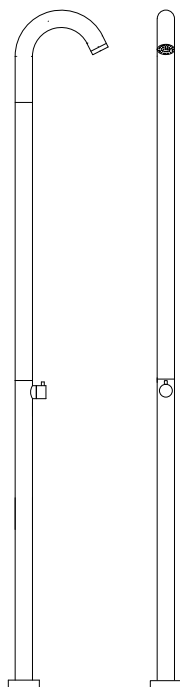
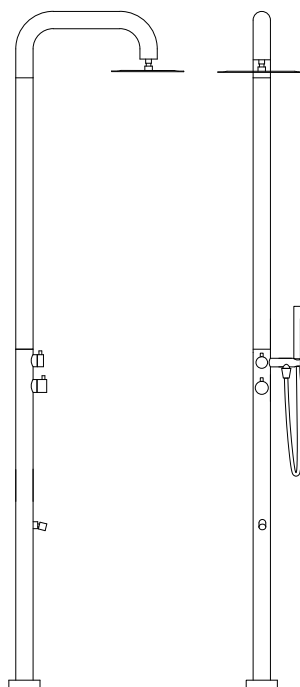


**CONGRATULATIONS ON THE PURCHASE OF YOUR NEW CASA LUSSO PRODUCT. WE HOPE YOU AND YOUR FAMILY ENJOY YOUR NEW PRODUCT AND CONSIDER US FOR ANY FUTURE PROJECT. CASA LUSSO PRODUCTS HAVE BEEN MANUFACTURED UNDER THE HIGHEST STANDARDS OF QUALITY AND WORKMANSHIP.**



OA318-BB / OA318-BN / OA318-GM



OA326-BB / OA326-BN / OA326-GM



**Lead Free**  
AS 3718  
WM 30023  
CASA LUSSO

BB = Brushed Brass  
BN = Brushed Nickel  
GM = Gunmetal

### GENERAL INFORMATION

#### MAINTENANCE

- Clean regularly using mild soap and dry with a soft cloth.
- Do not use abrasive cleaners, bleach, harsh detergents or citrus based cleaners on any products as these will scratch the surface.
- Tightening or adjustment of fittings over time is considered general maintenance.
- Failure to clean/replace aerators/flow restrictors as required will void warranty.
- Damage to finishes that arise from installation or post installation will void warranty.

#### The warranty will not apply if:

- The product has been damaged by improper use;
- The product has not been used in accordance with any applicable instruction guide;
- The purchaser has attempted to modify or repair the product;
- The purchaser has failed to observe the cleaning and maintenance guidelines;
- The product is not installed by a licenced Plumber.
- Flow controllers/ aerators not regularly cleaned/ replaced.
- The product is installed incorrectly or encased in concrete.

Product warranties are personal to the person who acquires the product for their own consumption or use and not for resale or resupply. Claims with this product cannot be made by anyone other than the consumer. Where a product is covered by parts and labour warranty, the warranty covers both the repair of the defective part or the provision of a spare part to replace the defective part and the installation of that part. Where a product is covered by parts only, the warranty covers both the repair of the defective part or the provision of a spare part in replacement. It does not include the removal of the defective part or the installations of the repaired or replaced part. We reserve the right to provide minor components (e.g. handles, aerators, hoses, dress rings and washers) as 'Parts Only' to the customer. Casa Lusso reserves the right to alter, or amend this warranty offer in writing at any time.

### FEATURES

#### Product Code:

OA318-BB / OA318-BN / OA318-GM  
OA326-BB / OA326-BN / OA326-GM

#### Premium Warranty (Domestic Use) :

7 year Replacement products and parts

**Material:** 316 Stainless Steel

**Pressure Rating:** 150kPa (Minimum)  
500kPa (Maximum)

Hot and cold water inlet pressure should be equal

**Temperature Rating:** 75°C (Maximum)  
If temperature exceeds 75°C, an approved tempering valve must be fitted.

#### Compatible Hot Water Units:

Storage tank and Continuous Flow.  
Not suitable for Gravity Feed units.

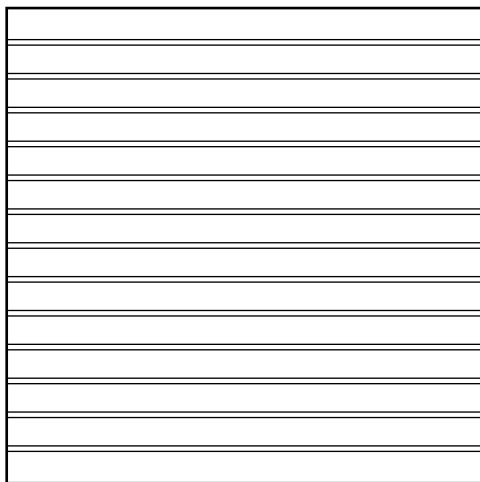
**WELS:** 3 Star, 8 litres per minute

**This product complies with the requirements of Lead-Free standards as defined in the National Construction Code Volume 3 and is suitable for use as part of Lead-Free Installation.**

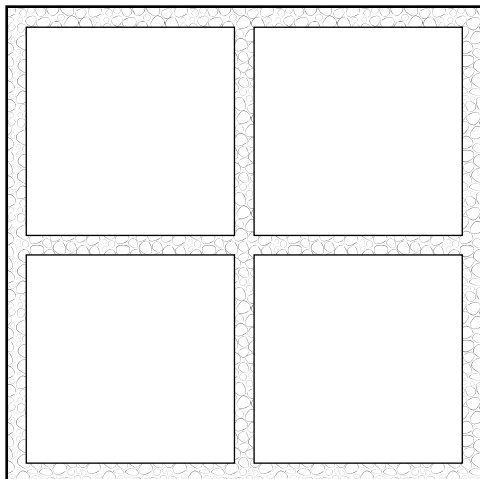
**FAILURE TO COMPLY WITH ANY OF THE ABOVE INSTRUCTIONS WILL VOID ALL WARRANTIES**

### IMPORTANT INSTALLATION INFORMATION

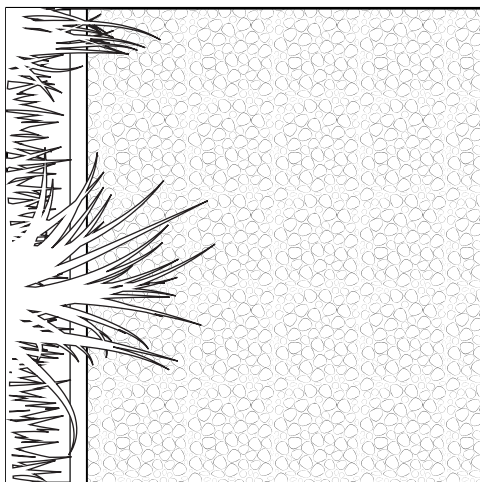
Please consult your plumber and/or your designer before installing the Outdoor Shower. There is various options for installing this product. The Outdoor Shower must not be installed encased in concrete to allow access to water connections. Please ensure drainage is compliant with current standards. Failing to follow Casa Lusso's guidelines will void all warranties. Various installations below using a on top of concrete slab method.



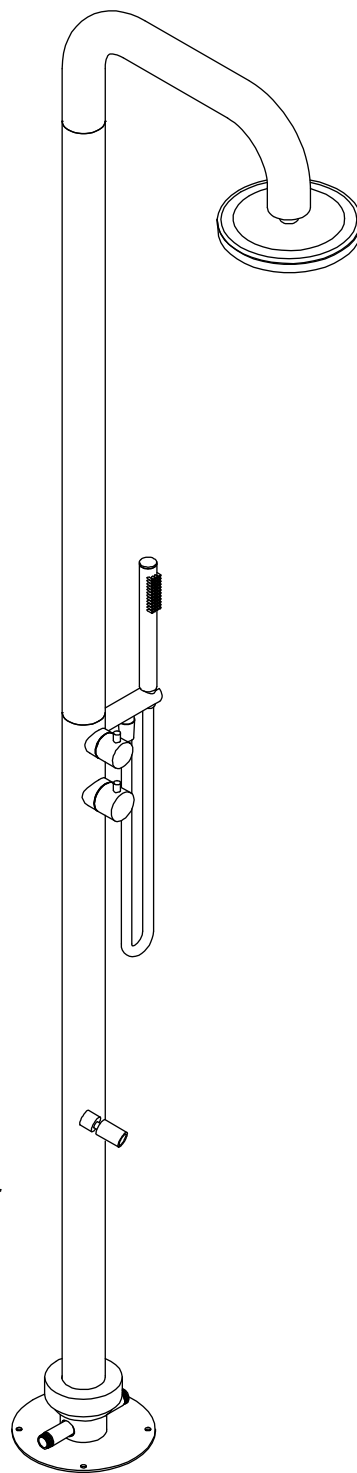
**Timber Decking**



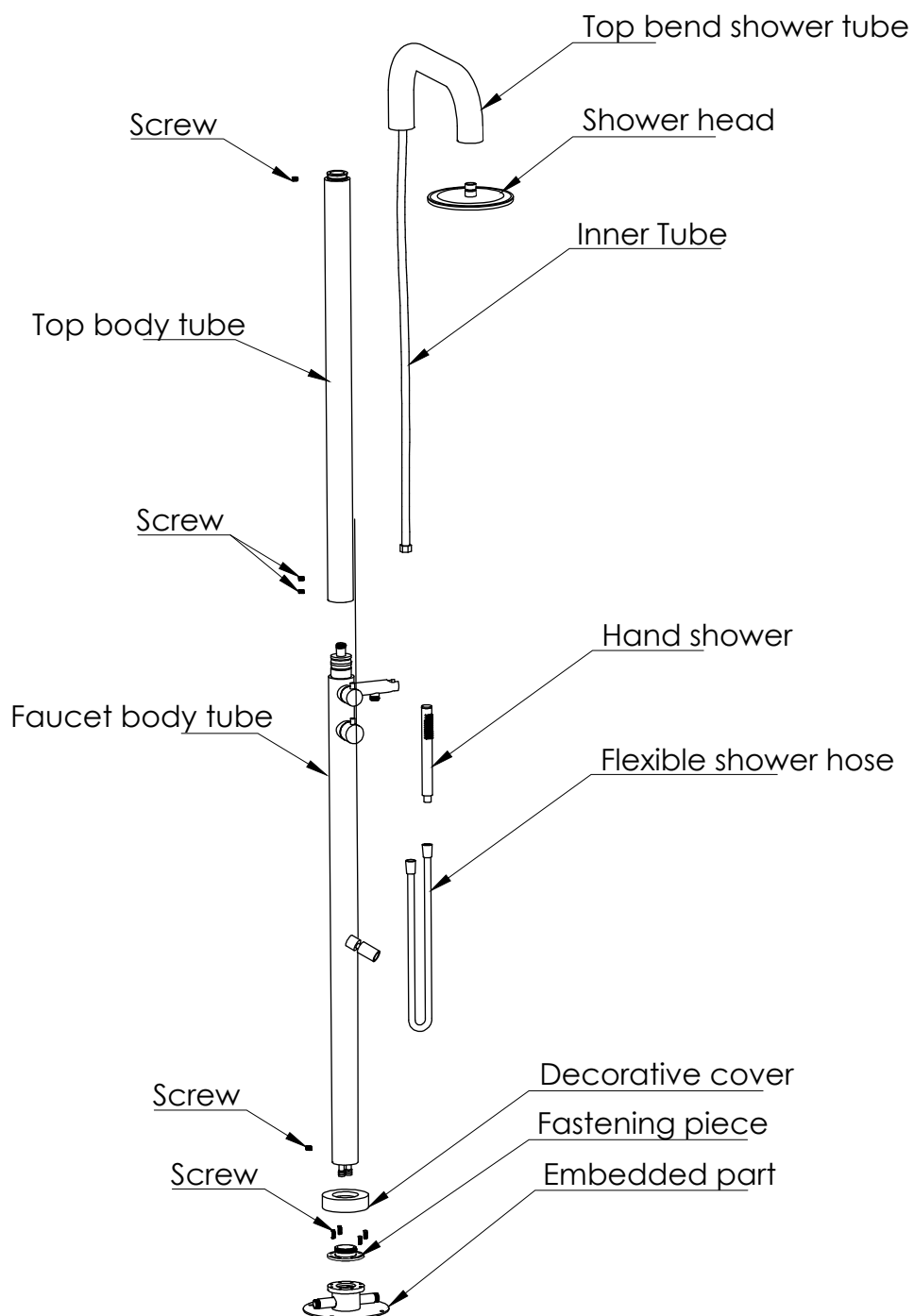
**Small Pebble fill with  
removeable paving**



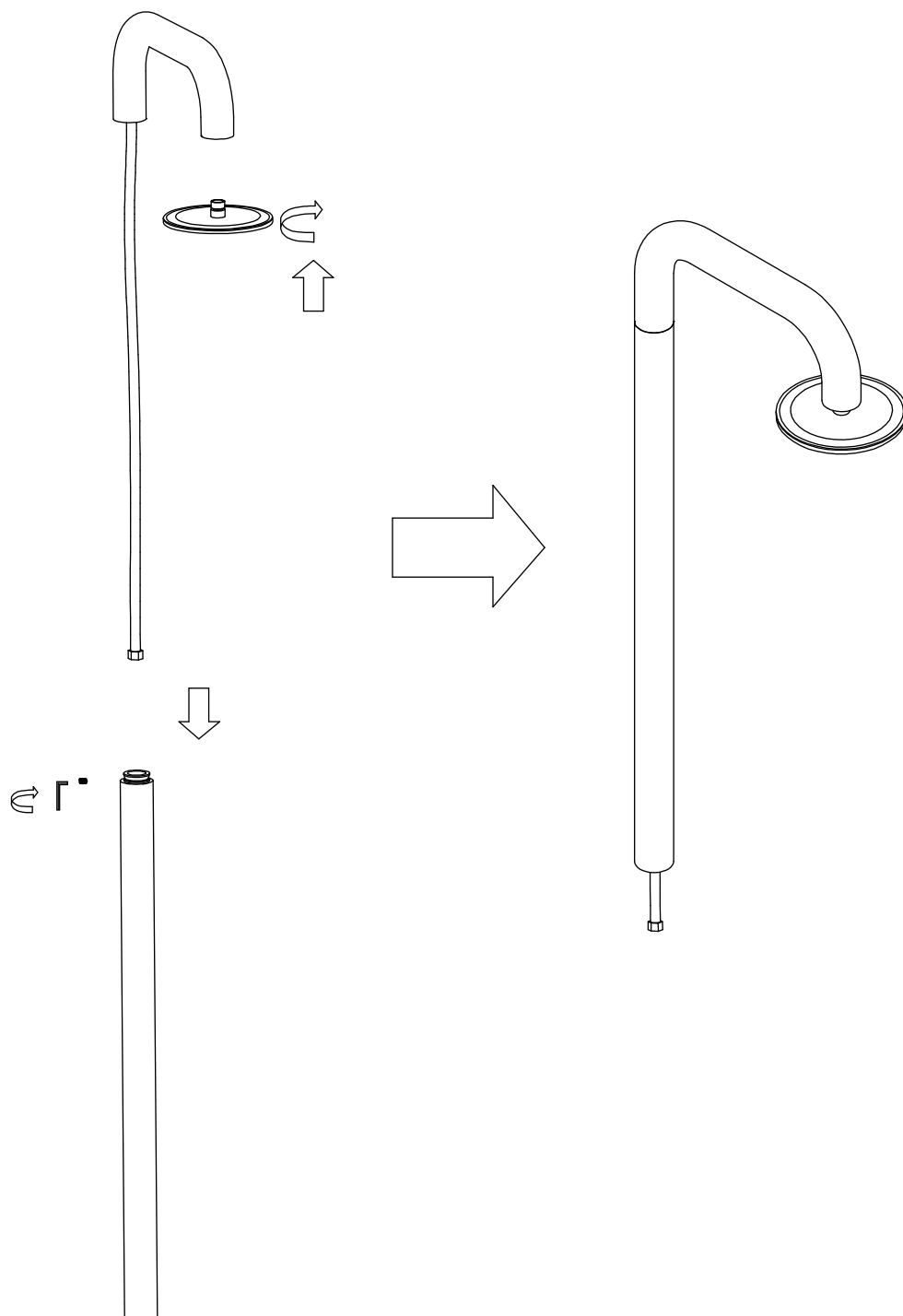
**Small Pebble fill and/or other  
outdoor decroative fill.**



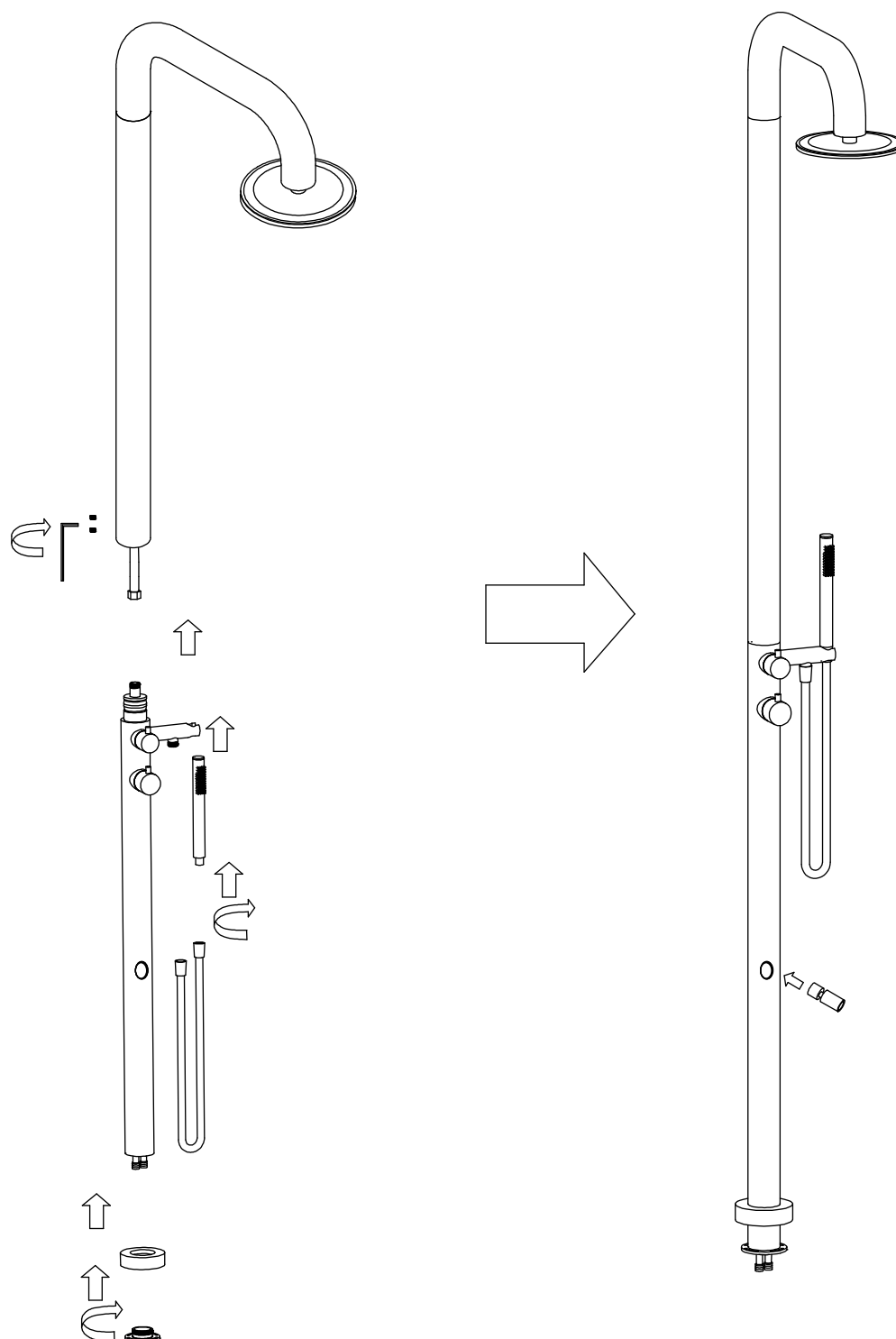
**FAILURE TO COMPLY WITH ANY OF THE ABOVE INSTRUCTIONS WILL VOID ALL WARRANTIES**



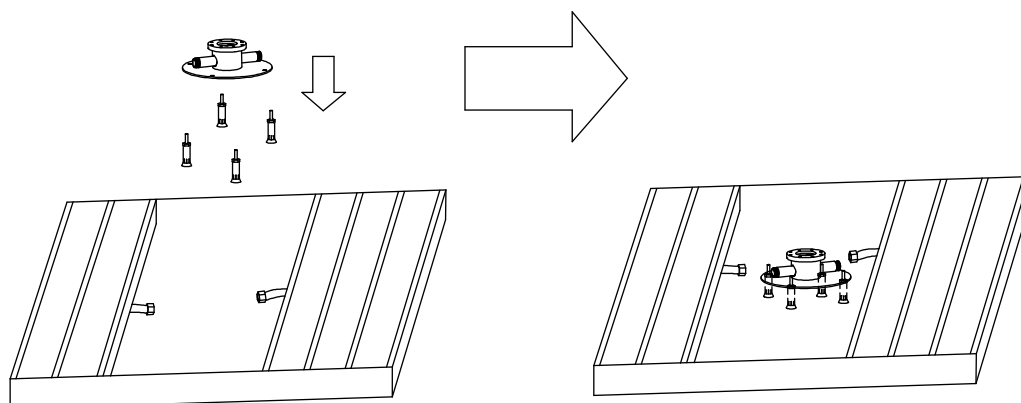
### Step 1



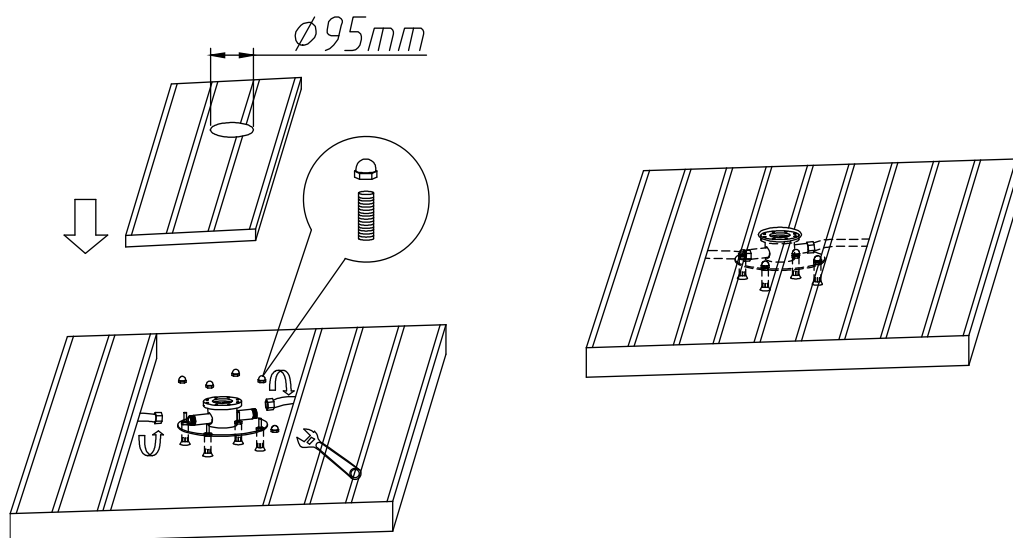
### Step 2



### Step 3



### Step 4



### Step 5

