

Mirror Cabinet Installation Instructions

CONGRATULATIONS ON THE PURCHASE OF YOUR NEW CASA LUSO VANITY. WE HOPE YOU AND YOUR FAMILY ENJOY YOUR NEW PRODUCT AND CONSIDER US FOR ANY FUTURE PROJECTS. CASA LUSO PRODUCTS HAVE BEEN MANUFACTURED UNDER THE HIGHEST STANDARDS OF QUALITY AND WORKMANSHIP.

GENERAL INFORMATION

The warranty will not apply if:

- The product has been damaged by improper use;
- The product has not been used in accordance with any applicable instruction guide;
- The purchaser has attempted to modify or repair the product;
- The purchaser has failed to observe the cleaning and maintenance guidelines;

Important:

- Take Care While Transporting and Handling Goods.
- This product should be installed by a qualified, licensed Tradesperson.

To tradesperson: Please ensure a copy of the installation instructions is left with the end user for future reference.

FEATURES

Installation: Wall Mount

Premium Warranty (Domestic Use) :
Cabinet - 3 yr replacement product
Mirror - 1 yr replacement product

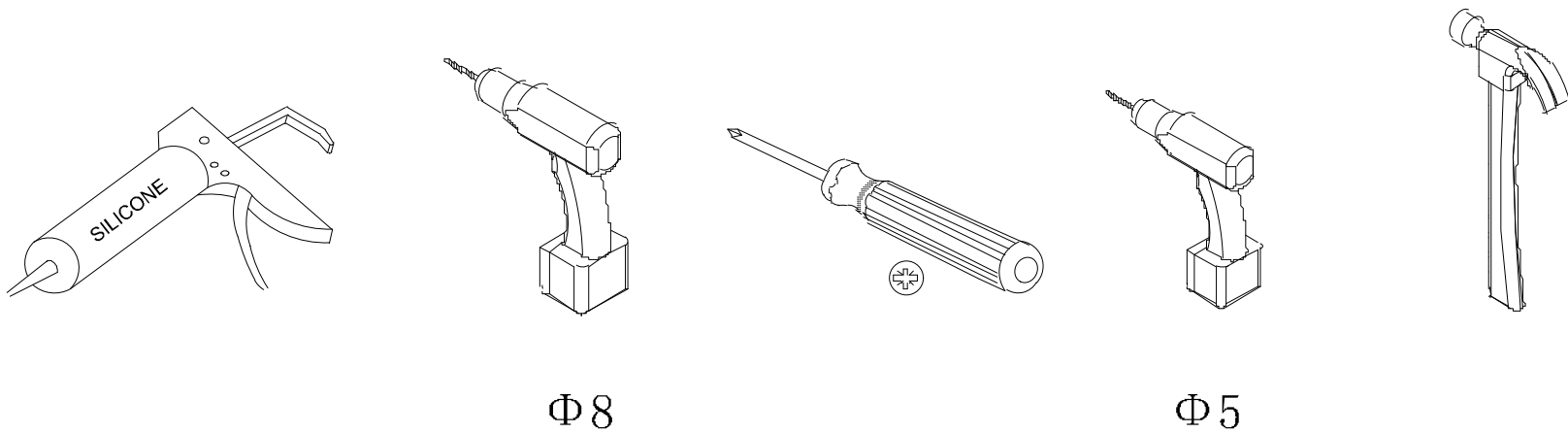


PRIOR TO INSTALLATION

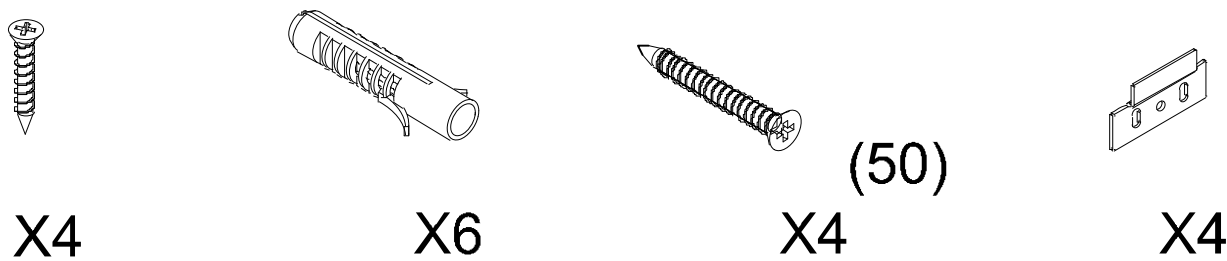
Ensure the Mirror Cabinet is inspected fully prior to installation. If damage has occurred, or a visible defect exists, do not proceed with installation and advise supplier immediately. Warranty will be void if product is installed.

INSTALLATION

Required Tools for Installation



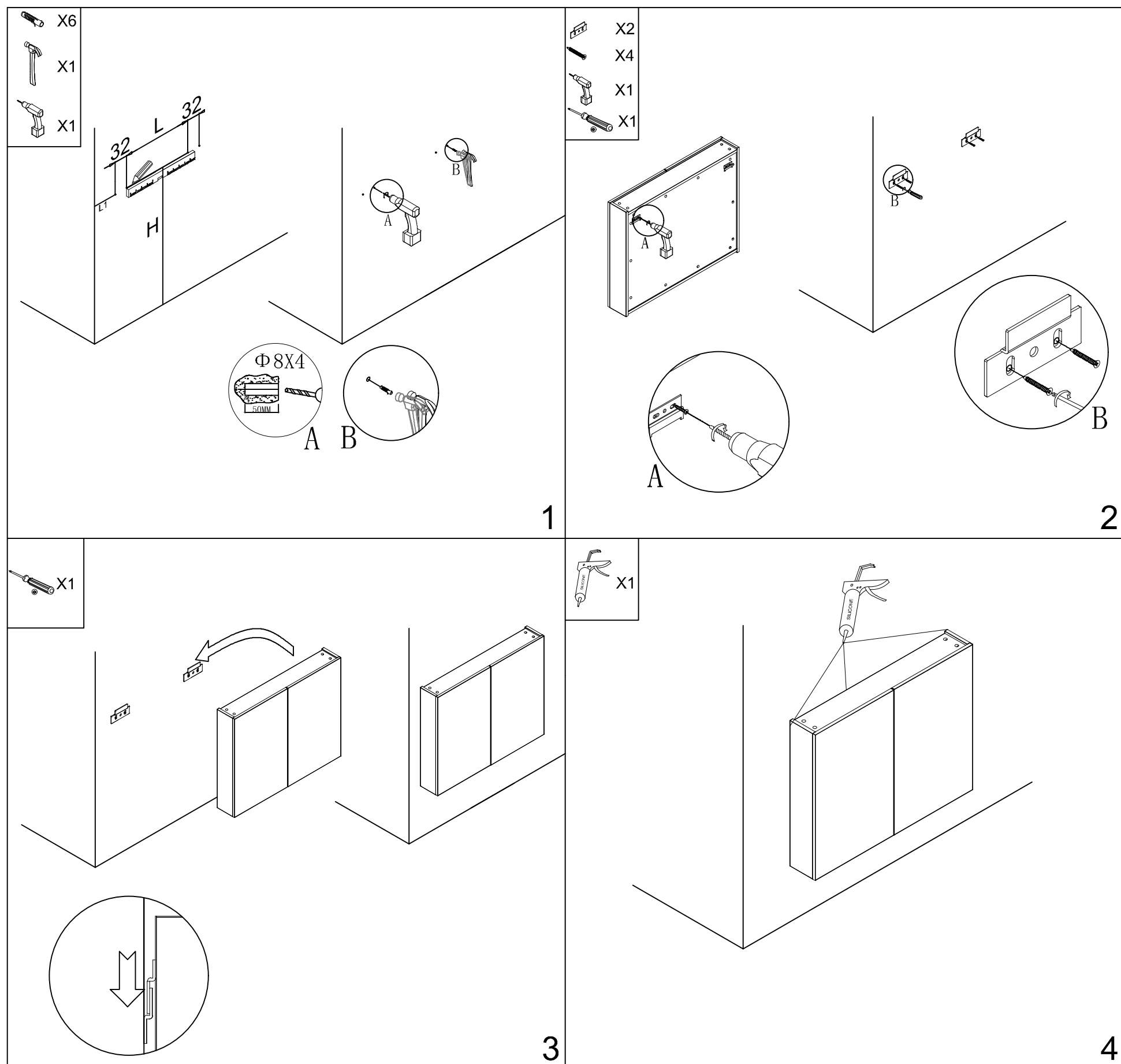
Parts Included



FAILURE TO COMPLY WITH ANY OF THE ABOVE INSTRUCTIONS WILL VOID ALL WARRANTIES

Mirror Cabinet Installation Instructions

- Please ensure the area where the Mirror Cabinet is to be installed is clean prior to installation.
- For safety, rest the Mirror Cabinet on a sturdy work surface whilst installing screws and hinges behind the cabinet.



FAILURE TO COMPLY WITH ANY OF THE ABOVE INSTRUCTIONS WILL VOID ALL WARRANTIES