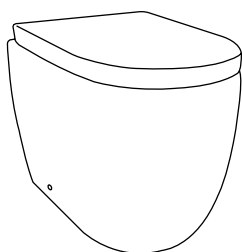


Congratulations on purchasing this Watermark and WELS Certified, High-Quality Toilet.

PRESSURE AND STANDARDS REQUIREMENTS

1. Inlet pressure range 100 - 500kpa
2. AS/NZS3500 requires that all water inlets within a house must be limited to 500kpa
3. Toilets must be installed by qualified trades people to the applicable standards
4. STANDARDS REFERENCES AS/NZS3500, AS/NZS1172, AS6400



To the Installing Plumber:

Please leave this instruction booklet for the customer.

DO NOT USE Concrete, Sand and Cement Mix or any other similar product when installing the Pan, doing so will void product warranty.

Prior to Installation

(Visual Inspection) & Installation requirements:

1. When the product has been unpackaged from packaging, please inspect the product to ensure it is in good order and condition and that all parts required for correct installation have been supplied. Any product that is faulty or has parts missing is to be returned to the store of purchase.
2. Sanitary ware products must be installed by a licensed plumber in accordance with the relevant installation instructions and all Australian Standards and local authority requirements. Failure to follow the relevant installation instructions, Australian Standards and local authority requirements will void the warranty and all-associated costs will be transferred to the end user.

FAILURE TO COMPLY WITH ANY OF THE ABOVE INSTRUCTIONS WILL VOID ALL WARRANTIES

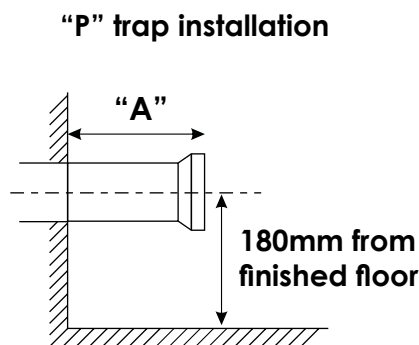
Contents

Floor Pan Installation	3-4
Toilet Seat Installation	5
Trouble Shooting, Operation and Maintenance	6
Product Warranty	7

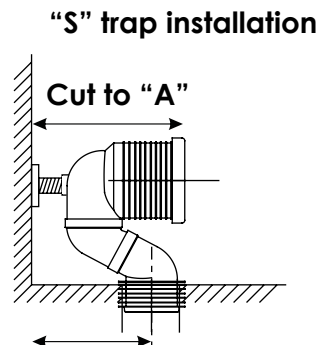
Floor Pan Installation

The set-out installation should be between 145 to 190mm *(refer to the purchased model) for "S" trap installation and 180mm from the finished floor to the centre of the outlet for "P" trap Installation.

Pre-install the "in-wall cistern" according to its individual installation instructions. Remove the pan from the box. Cut and install the appropriate connectors (**Fig.1 and Fig.2**) And fix floor brackets (**Fig.3.a and Fig.3.b**)

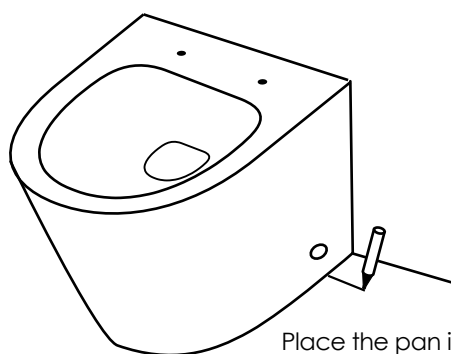


(Fig 1)



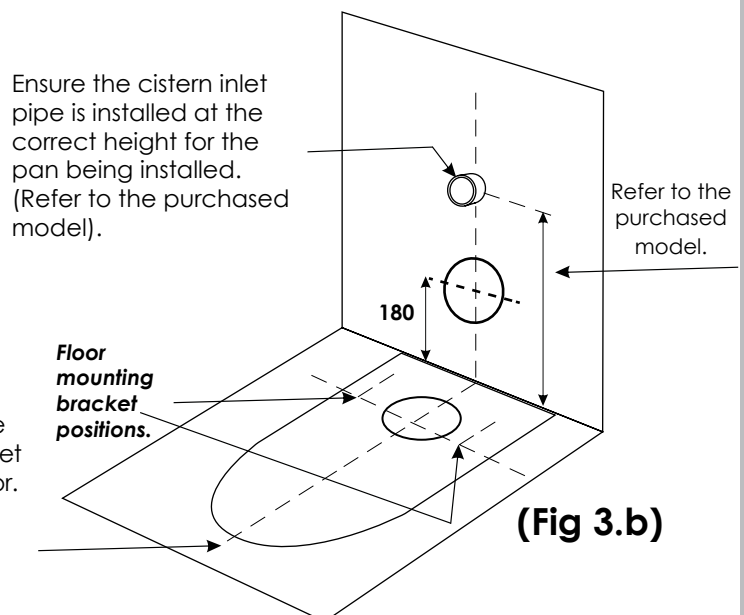
(Fig 2)

NOTE: "A" is the distance from the back of the pan to the end of the outlet plus 40mm.



(Fig 3.a)

Place the pan in line with the centerline of the waste outlet and mark the bracket hole centre line on the floor. Remove the pan and drill and fix the brackets to the floor.

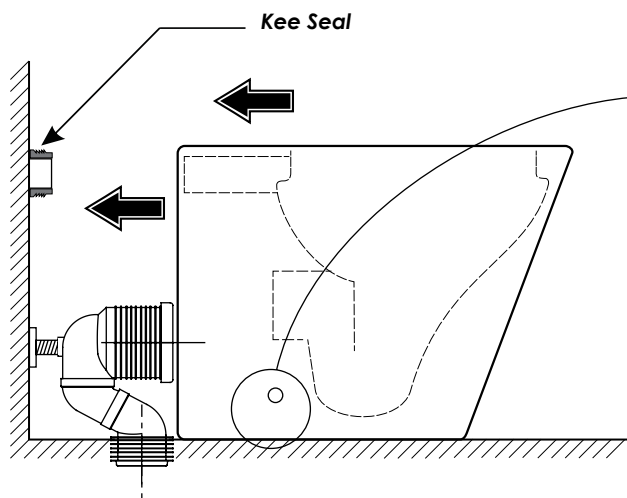


(Fig 3.b)

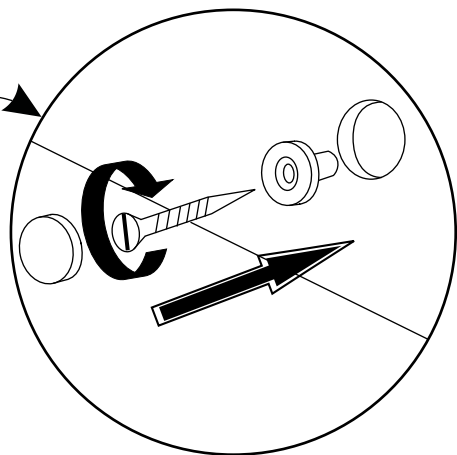
FAILURE TO COMPLY WITH ANY OF THE ABOVE INSTRUCTIONS WILL VOID ALL WARRANTIES

Floor Pan Installation

Measure and cut the connecting pipe (not supplied) between the in-wall cistern and the pan. Attach the kee seal to the wall, ensuring proper engagement with both the inlet pipe and outlet connector **(see Fig 4)**. Secure the fixing screws through the side fixing holes into the floor brackets **(see Fig 5)**. Flush the system and check for leaks. Apply a bead of silicone around the base, and then clean up any excess.



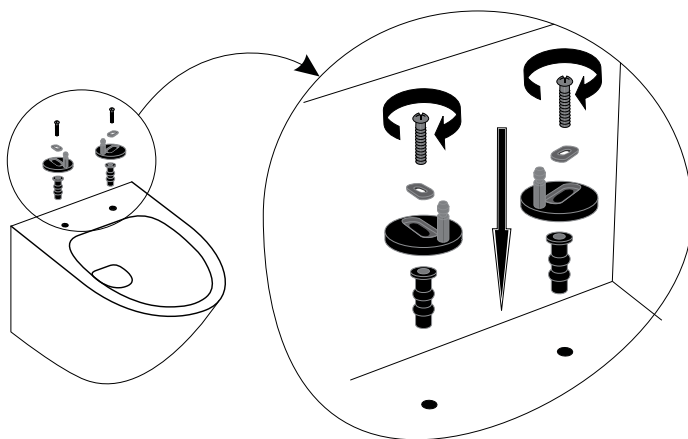
(Fig 4)



(Fig 5)

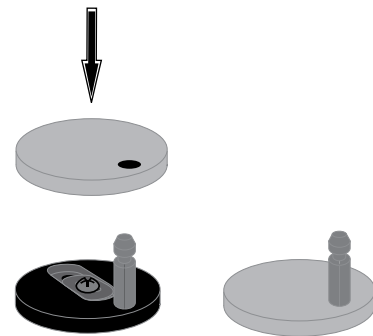
Seat Installation

Remove the seat and cover from its box. Insert the top fixing rawl plugs into the seat bolt holes. Place the hinge blocks, without the stainless-steel covers, over the rawl plugs and loosely fix the screw through the hinge blocks into the rawl plugs **(Fig 6 and 7)**. Fit the seat and cover onto the hinge blocks by locating the fixing holes onto the hinge pins and push into place. Close the seat and cover onto the pan, and adjust the position in line with the rim of the pan. Tighten the screws. Open the seat and cover and depress the quick fix buttons to remove the seat and cover. Place the stainless-steel covers over the hinge blocks and replace the seat **(Fig 8)**.



(Fig 6)

(Fig 7)



(Fig 8)

Floor Pan Toilet Installation Instructions

Trouble Shooting, Operation and Maintenance

Problem	Possible Cause	Remedy
Water is leaking into the pan.	Water level is set too high.	Re-adjust the inlet valve to lower the water level below the overflow pipe height.
	Outlet valve seal is leaking.	Remove outlet valve and clean outlet seal and seat or replace outlet seal.
Water is leaking onto the floor.	Flexible hose or connections are leaking.	Retighten connections or replace hose.
	Cistern fitting components are leaking.	Check and retighten outlet, inlet and plug nuts.
	Outlet connector broken or not engaged correctly.	Uninstall pan and check connector. Engage pan correctly, and/or replace connector.

Operation and Maintenance

- For Non-Solid Waste removal use the half flush button to conserve water.
- To clean the toilet suite only use warm soapy water, DO NOT use chemical cleaners, this will void warranty.

Product Warranty

7yr replacement product or parts*

1yr labour Parts / valves / accessories / replacement parts.

****Note: Excludes valves, seats, button assembly, links, flush pipes and other internal components which carry a 1yr replacement warranty.***

For full terms and conditions including how to claim and your rights as a consumer, after sales and other enquiries, please contact your store of purchase.

In addition, if you are a consumer as defined in the Australian Consumer Law, the goods come with a guarantee that cannot be excluded and you are entitled to a replacement or refund for a major failure and compensation for any other reasonably foreseeable loss or damage. You are also entitled to have the goods repaired or replaced if the goods fail to be of acceptable quality and the failure does not amount to a major failure.