



INSTALLATION

INSTRUCTIONS

**FAILURE TO COMPLY WITH ANY OF THE INSTRUCTIONS
IN THIS GUIDE WILL VOID ALL WARRANTIES**

www.casalusso.com.au

LORENZO, PARALLELO & VERTICALE
WALL HUNG VANITY INSTALLATION GUIDE

INSTALLATION INSTRUCTIONS

Congratulations on the purchase of your new Casa Lusso Vanity. We hope you enjoy your new product and consider us for future projects. Casa Lusso products have been manufactured under the highest standards of quality and workmanship.

Please ensure you read the following instructions below prior to installation.

GENERAL INFORMATION

The warranty will not apply if:

- The product has been damaged by improper use;
- The product has not been used in accordance with any applicable instruction guide;
- The purchaser has attempted to modify or repair the product;
- The purchaser has failed to observe the Care Instructions guide

Important:

- Take care while transporting and handling goods
- This product should be installed by a qualified, licensed Tradesperson.

To Tradesperson:

- Please ensure a copy of the installation instructions is left with the end user for future reference.

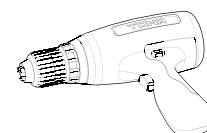
WARRANTY

5 year replacement product and parts: 1 year labour

PRIOR TO INSTALLATION

Ensure the vanity contents is inspected fully prior to installation. If damage has occurred, or a visible defect exists, do not proceed with installation and advise supplier immediately. Warranty will be void if the product has been installed.

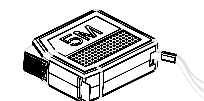
TOOLS REQUIRED FOR INSTALLATION



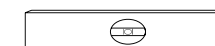
Electric/Battery Drill



Drill Bit



Tape Measure



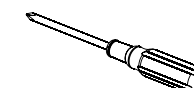
Spirit Level



Kitchen & Bathroom
Non-Acidic Silicone



Pencil



Screw Driver

CARE INSTRUCTIONS

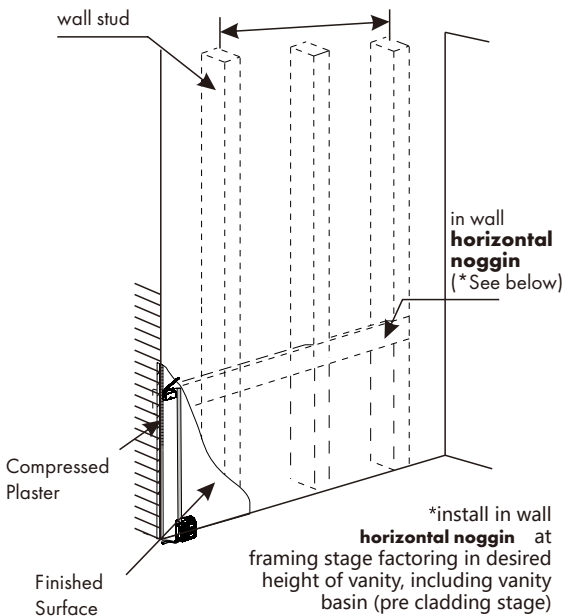
To allow your products to remain as elegant as the day they were installed please read the guide below.

DOOR AND CABINET CARE:

Regular cleaning with a damp cloth is sufficient. Never use strong detergents or abrasive cleaners as this may damage the surface finish of your furniture.

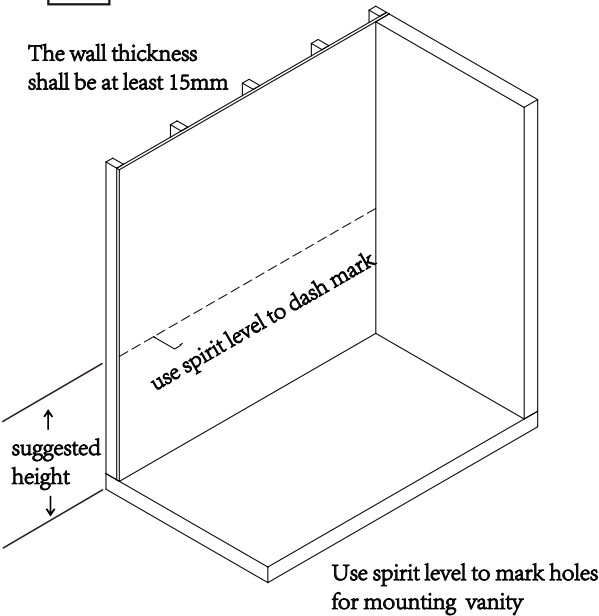
WALL HUNG VANITY WITH WALL BRACKET SYSTEM FOR HOLLOW WALLS

1 Pre-cladding



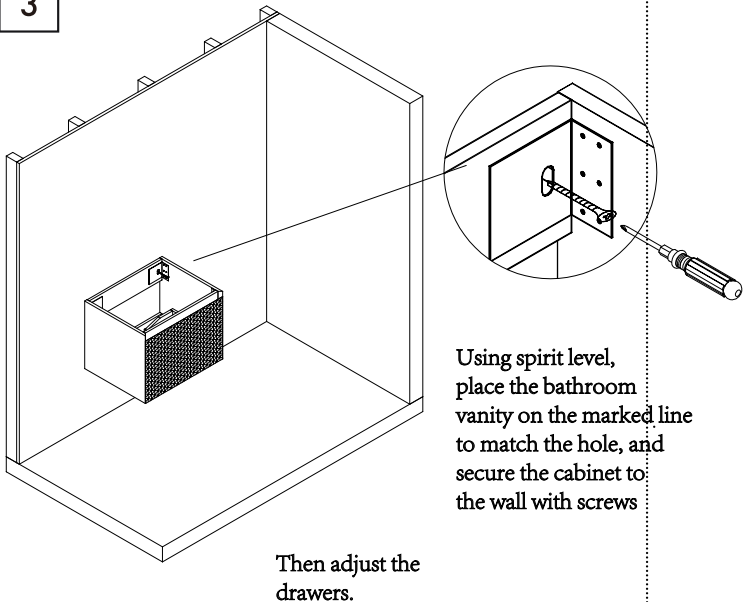
2 Post-cladding

The wall thickness shall be at least 15mm



The suggested height with under counter basin is: 800mm
the suggested height with countertop basin is: 760mm

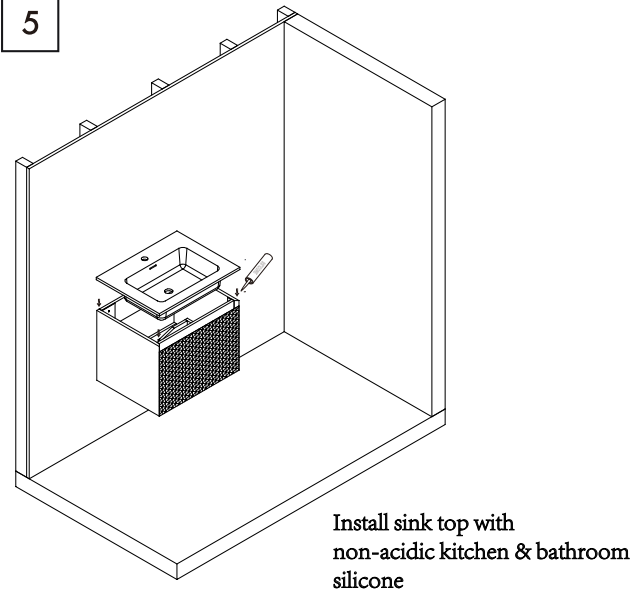
3



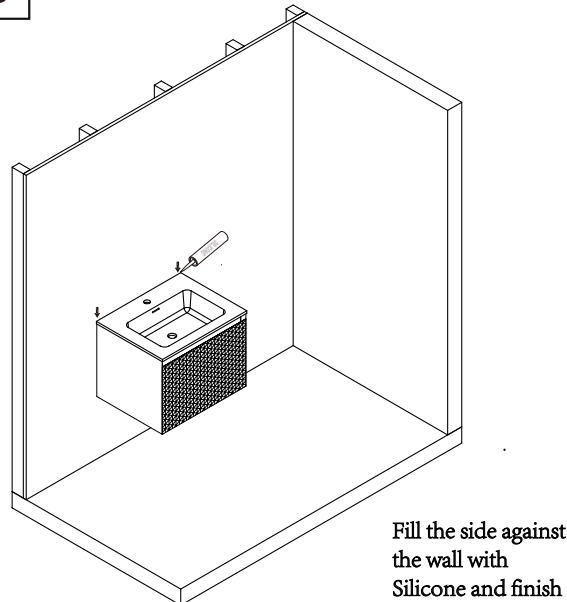
4

To avoid damage remove cabinet drawers. Cover the drawer runners with plastic sheet to prevent debris from getting into the mechanism. Refer to the Drawer Adjustment and Removal section on page 5.

5



6



7

The unit must be sealed along the back edge of the top and down the sides against the wall with non acidic bathroom & kitchen silicone. Seal around the cabinet with silicone.

8

Please note when installing an undermount basin or counter basin onto a stone top, they must be siliconed on. When the silicone has dried ensure you caulk around the basin and stone top.

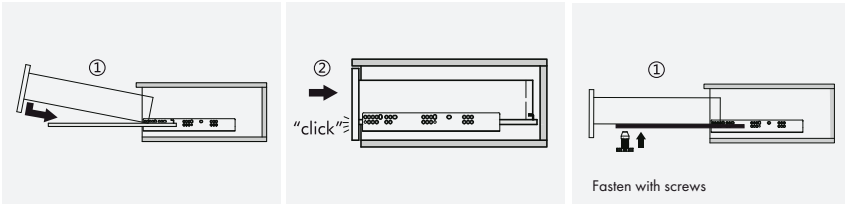
9

The vanity is now ready for the tapware and waste installation.

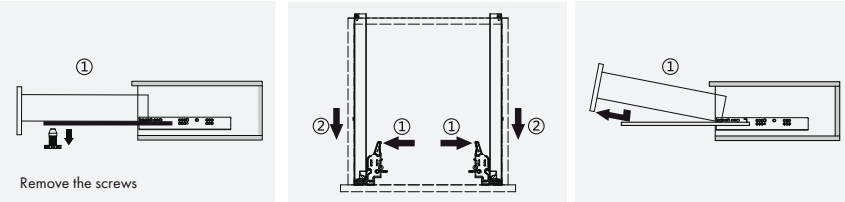
DRAWER ADJUSTMENT AND REMOVAL

UNIHOOPER QUICK ASSEMBLY DRAWER SLIDE

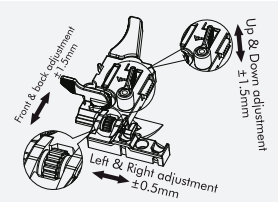
Installation



Removal

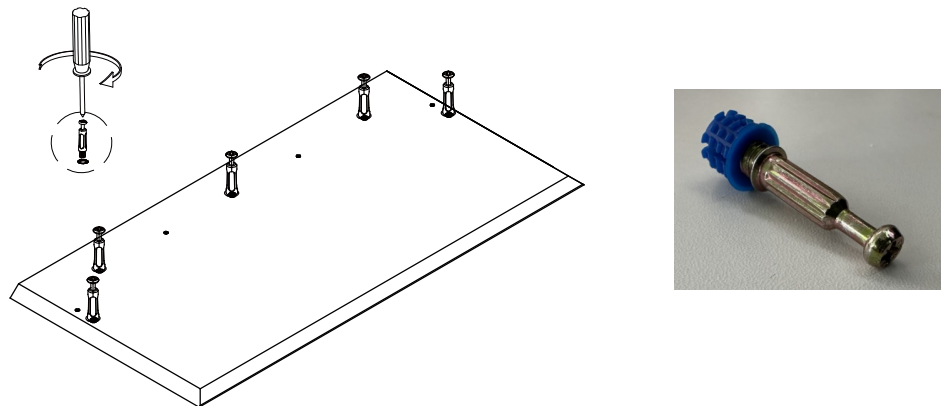


Adjustment

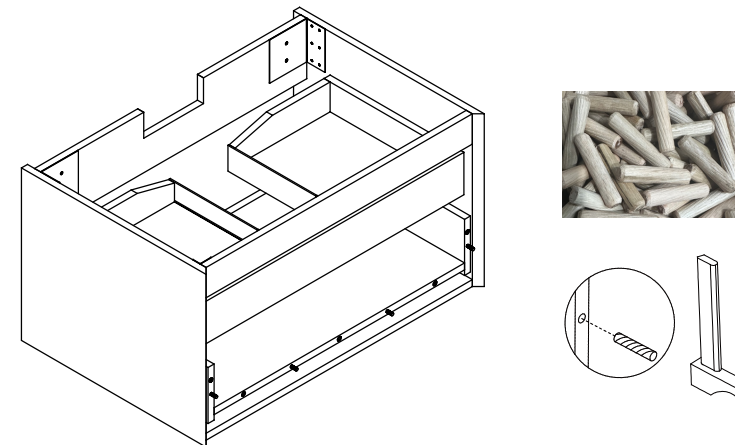


LORENZO, PARALLELO & VERTICALE DRAWER FRONT INSTALLATION INSTRUCTIONS

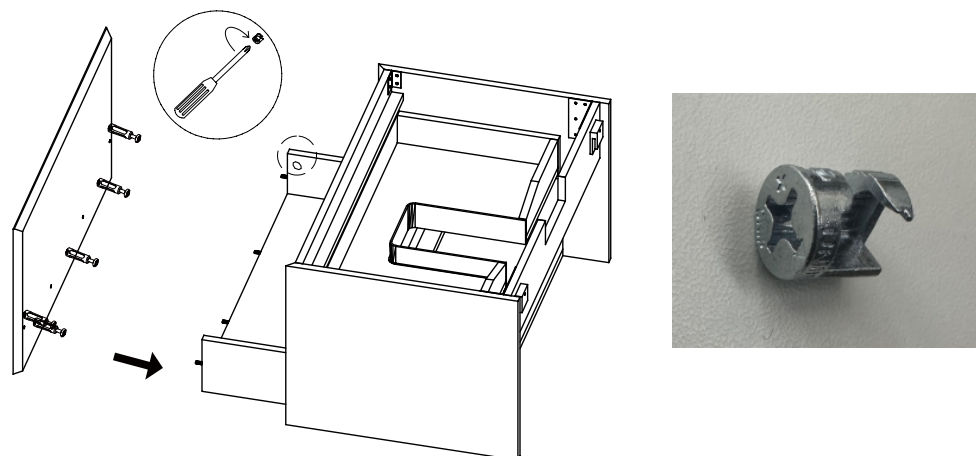
- 1** Install the connecting rod into the slightly larger hole on the back of drawer panel.



- 2** Knock the wooden tip accessories into the hole on the drawer box, which will correspond to the slightly smaller pre-embedded hole on the back of the drawer.



- 3** Install the drawer panel and the drawer box together and tighten them with the three-in-one lock.



**FAILURE TO COMPLY WITH ANY OF
THE INSTRUCTIONS IN THIS GUIDE
WILL VOID ALL WARRANTIES**

www.casalusso.com.au